

The new DPE-500 Series hybrid editing system from Editware is the culmination of years of experience and development. Windows NT is clearly the operating system of choice for post-production environments and Editware has developed this dual processor Windows NT workhorse with plenty of power to put true hybrid real-time editing at your fingertips.

SUPER EDIT NT DIGITAL PRODUCTION EDITOR

SUPER EDIT NT

Super Edit NT will feel right at home to new editors, while seasoned Super Edit users will find an old friend that knows some new tricks. The Super Edit NT screen now resides inside a desktop window. The screen is similar to the original Super Edit screen, with a Mark Table and an Edit Decision List (EDL). The screen is unique in that it auto-sizes the fonts displayed as the window size is changed. Super Edit NT can be minimized during an Auto-Assembly while the user is working on something else on the desktop. The font and the color scheme used can also be changed as desired.

Super Edit NT now displays device status information in the Mark Table, such as REW, PLAY and LOCKED. Different colors are used to indicate the individual stages of an edit such as CUEING, ROLLING and RECORDING or PREVIEWING. You now know at a glance precisely what is happening with each device.

POWER TO SPARE

Since Windows NT is multi-tasking, other applications can be run on the NT desktop along with Super Edit NT. If the additional applications begin taking up an inordinate share of the processing time, only the display refresh of the Super Edit NT screen will be affected. Super Edit NT will run in real time in the background, on the dedicated real-time processor, and will be unaffected by other applications.

Super Edit NT takes advantage of the NT file system, and uses NT to manage all Super Edit, EDL, macro, and configuration files. All of these files can now have any file name of any size or form allowed by Windows NT.

MOUSE OR NOT

Super Edit and a mouse? Super Edit NT comes standard with a genuine Microsoft IntelliMouse (wheel) mouse. If an editor prefers the use of a mouse, Super Edit NT makes good use of it. The mouse buttons can be used to interface with Yes/No/Reset dialogs, All Stops, file manipulation, screen display options and sizing, and many other Super Edit NT functions. The right mouse button provides a drop down menu to put many useful Super Edit NT functions right at your fingertips. The mouse wheel is used to scroll the edit decision list both line by line and page by page. The mouse also provides you with comprehensive machine control that is so precise, you might prefer it to the jog knob. Or perform every editor function with the custom-designed keyboard. Or use both, your choice.

Y2K COMPLIANT

Super Edit NT is fully Year 2000 certified, as is Windows NT. This is truly a platform and software with a future.

DPE-500



Dual Processor Chassis



K2 keyboard

Super Edit NT

File EDL Macros Configs Font Utilities Help

B1 SUPER EDIT NLE (M)
V1.0A SUPER EDIT
NLE PEGS



Dual Processor Chassis



K2 keyboard

DPE-500

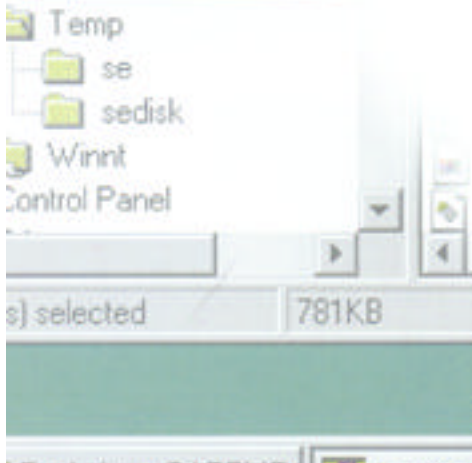
THE HARDWARE

The DPE-500 includes Microsoft Windows NT 4.0 as its standard operating system. Super Edit NT runs in a window on the NT desktop, providing the user with a familiar operating system while keeping the same Super Edit look and feel.

DPE-500's custom board was developed by Editware to allow Super Edit to support 20 state-of-the-art RS-422 serial I/O ports in real time under the familiar Windows NT user interface.

- ▶ Dual processors running independently on a shared PCI bus. This ensures Super Edit NT has the power it needs to provide a true real-time hybrid editing environment
- ▶ 2MB of battery backed static RAM, which provides protection from power outages for Edit Decision Lists
- ▶ Industry standard 2.5" form factor ATA/IDE hard drive that services the needs of both processors
- ▶ 1.4MB 3.5" floppy disk drive (MS-DOS)
- ▶ Solid state Flash BIOS and an 8MB Flash Disk are provided for boot services, both of which are easily re-programmed on board, on site, as needed
- ▶ 8 Channel audio support (HDTV compatible)
- ▶ SVGA monitor support (up to 1280x1024)
- ▶ Ethernet gives Super Edit NT full access to networks
- ▶ 20 state-of-the-art serial I/O ports with built in 10KV protection from transient surge damage
- ▶ Dedicated ports for:
 - Keyboard port
 - Mouse port
 - Ethernet port
 - COM1 port
 - Video port for video switcher
 - Audio port for audio mixer
 - CG/Graphics port
- ▶ Eight dry, relay based GPI contacts provided on board for non-serially-controlled devices
- ▶ Extensive built-in on-line help
- ▶ PCI Mezzanine Card (PMC) expansion slot accepts standard single-wide PMC cards

Fully backed by a 1 year parts and labor warranty with the famous customer service we've delivered since our inception. We know editors. It's what we do.



 editware
GRASS VALLEY, CALIFORNIA

200 Litton Drive, Suite 308
Grass Valley, CA 95945
Tel: (530) 477-4300
Fax: (530) 477-4304
sales@editware.com
www.editware.com