

Fastrack Pre-Release Notes **Version 4.1**

This document covers changes made to Fastrack since 4.0.x14

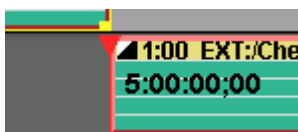
Due to the descriptive graphics included, these TechNotes are best displayed and printed in color.

Added 10/13/05

1. **ALL – Reel ID Changes** – Many customers have been confused when entering a Reel ID as opposed to naming the mounted Reel. Slight changes have been made to eliminate this confusion.
 - Press **[INIT]** to name the Reel currently mounted on the VTR assigned to this Track. This text entry field is no longer displayed in the INIT dialog unless a VTR is assigned to this Track.
 - Press **[EVENT]** to assign a Reel ID to a VTR Event on this Track that is not currently mounted.
 - When the system is switched between displaying **Device Names** and **Reel Names**, only VTR names are displayed.
2. **ALL – TBC Dialog 1** – The TBC control dialog is now permanently assigned to **[CTRL][VIDEO]**.
3. **ALL – TBC Dialog 2** – If the TBC is active for an Event, that Event now displays a .
4. **ALL – Pre-read Status** – When Pre-read is active, PREREAD is now displayed in the status area in the upper left of the edit screen.
5. **LINEAR – Work Bin** – We have fixed a minor bug in V4, where Auto Pickup in Linear mode would duplicate Edit Marks and GPIs in the Work Bin.
6. **LINEAR – Replay** – The Replay function in the Linear mode now selects the R-VTR consistently.
7. **ALL – PEGS - MEM and MEMX** are now working in PEGS.
 - You can specify an M/E on the same line as a MEM...i.e. "MEM99 ME2". If you don't specify an M/E, Fastrack uses the default M/E specified in the Switcher Assign dialog.
 - You can specify **ALL**, for example, **MEMX99 ALL**. This selects the MEM register on all M/E's that are specified in the switcher **.swi** file.
 - In the Effects dialog, selecting **User Select** for the MEM has the same effect as selecting ALL in the PEGS MEM dialog...i.e. you get the M/E's specified in the switcher **.swi** file.
8. **ALL – Sony 7200** – New drivers have been created specifically for the Sony DVS-7200. The DVS-7200.swi does not have the Key Options dialog in the Effects dialog. The DVS-7200b.swi does have the Key Options dialog in the Effects dialog.
9. **ALL – GV M-Series** – We have created a M-Series VDCP non-linear control driver for the Grass Valley M-Series server. See **TechNote 1** later in this document for additional information.

Added 9/28/05

10. **ALL – Transition Rate Display** – The programmed transition rate is now displayed on an Event to the right of the transition icon. In the example below, the programmed transition rate is 1-second. The rate is always shown in hh:mm:ss:ff.



11. **ALL – Assignment Page** - In the Assignment Page dialog, when you add or change the Video crosspoint assignment, it immediately selects that crosspoint on an enabled switcher.
12. **ALL – Quick Speed Entry** - You can now define and enter a speed without bringing up the SPEED dialog. This defined speed is for the whole Event.

Type the desired speed and press **[SHIFT][SPEED]**. For example, pressing **[5]**, **[0]**, **[SHIFT][SPEED]** enters a speed of 50% at the beginning of the current Event regardless of the CPI position..

You can also enter a **Variable Quick Speed** by first putting the VTR or Clip into **Variable** and then pressing **[SHIFT][SPEED]**. The current Variable speed will be entered at the beginning of the current Event regardless of the CPI position.

Press **[SHIFT][CTRL][SPEED]** to clear all speeds without bringing up the SPEED dialog.

Added 9/21/05

13. **ALL – Aux Bus** – We have added an option to the Assign Dialog, "**Off Air Sw Aux Bus**". When this item is selected, and when Fastrack is at rest (not On Air), all green key crosspoint selections are switched on the Aux Bus rather than the Program bus.
14. **ALL – VTR Shot List** – A problem that prevented a proper duration to be calculated in DF while creating clips in the VTR shot-list has been resolved.
15. **ALL – Size Fit** – You can now pick a “range” of Events to “Size Fit” on the screen.
 - Select the range by selecting (**[CTRL][Click]**) 2 events (only). The selected Events do not have to be on the same Track.
 - Press **[SHIFT][SIZE FIT]**. The selected range is fit to the screen.
16. **ALL – Timeline Scale Settings** – You can now cycle through all your pre-set Timeline Scale Settings.
 - Press **[ALT][Left arrow]** or **[ALT][Right Arrow]** to cycle thru all the sizes (Size1 thru Size Fit). The cycle starts at the last size you had selected. You **must** have the Size Function keys enabled and displayed.
17. **ALL – INIT Page Memory** – Press **[SHIFT][INIT]** – The INIT Page now automatically opens with the last previously selected function selected.
18. **ALL – Wipe Pattern Dialog** – Additional capabilities have been added to the Wipe Pattern dialog. Press **[WIPE]** to open the wipe pattern dialog (switcher dependent). When opened, you can move UP, DOWN, LEFT, RIGHT, PAGE UP, PAGE DOWN, HOME and END using the keyboard:
 - Left Arrow (both) - moves the highlight left by 1 pattern.
 - Right Arrow (both) - moves the highlight right by 1 pattern.
 - Up Arrow (both) - moves the highlight directly up one row.
 - Down Arrow (both) - moves the highlight directly down one row.
 - Home - Moves the highlight to the first pattern.
 - End - Moves the highlight to the last pattern.
 - Page UP - moves the highlight directly up 1 page (4 rows).
 - Page DN - moves the highlight directly down 1 page (4 rows).
 - Press **[ENTER]** (either one) to select the highlighted pattern.
 - Press **[RECORD]** to Tab through the wipe dialogs.
19. **ALL – Jogger Record Disable** - The INIT Page status of the Jogger Panel record enable/disable is now correctly saved in the <config>.ini files.

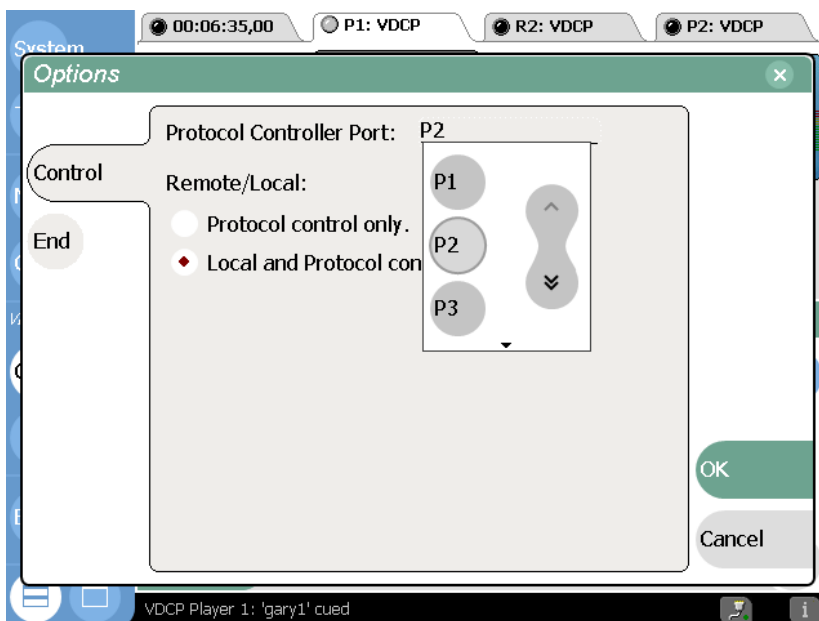
TECHNOTE 1 – M-Series VDCP Control Driver

M-Series setup for use with Fastrack

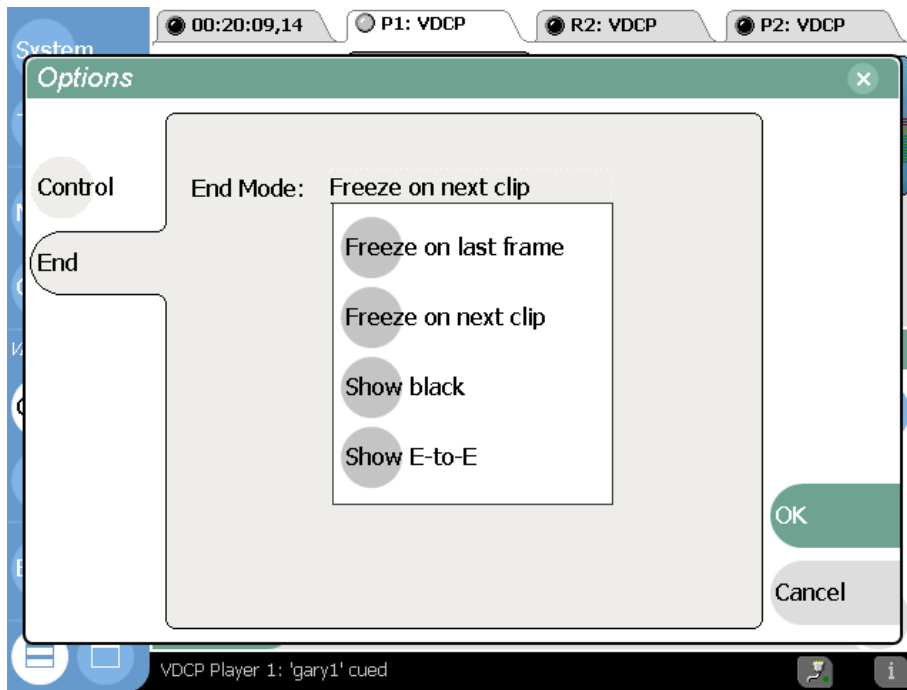
1. Select VDCP control on the M-Series for each device you wish to control.
 - a. Select **Monitor**
 - b. Select the **Split Screen icon** (bottom left).
 - c. From the drop-down menu select **Remote VDCP**.



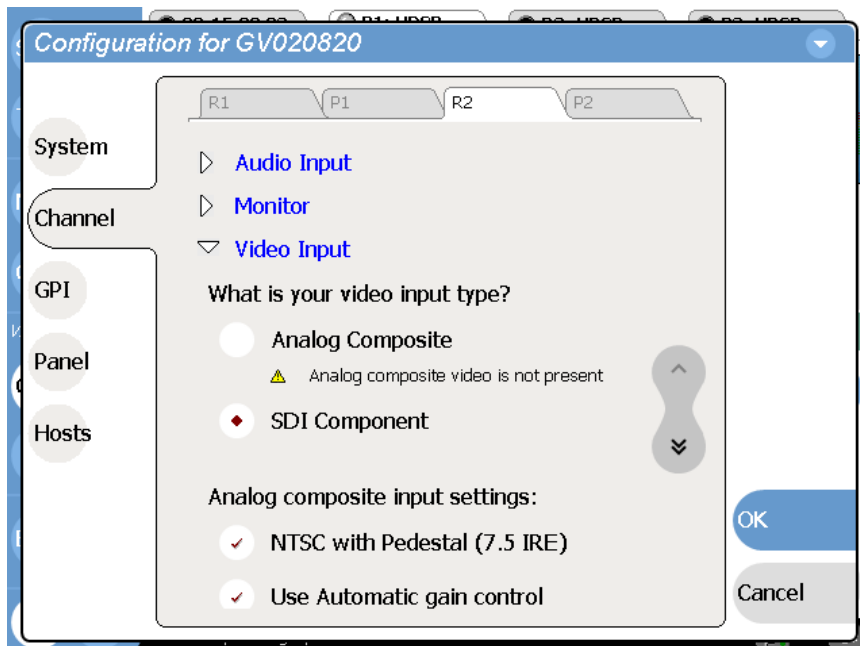
2. Select a Protocol Controller Port for each VDCP controlled device. Do not confuse this with the 4 RS-422 control ports on the rear of the M-Series chassis.
 - a. Select **Options ...**, **Control** - then select a Protocol Controller Port **P1** through **P4**. Click **OK**.



3. Select the Freeze on next clip option so Fastrack will switch between clips.
 - a. Select **OPTIONS**
 - b. Select **END**
 - c. Select **Freeze on next clip**.



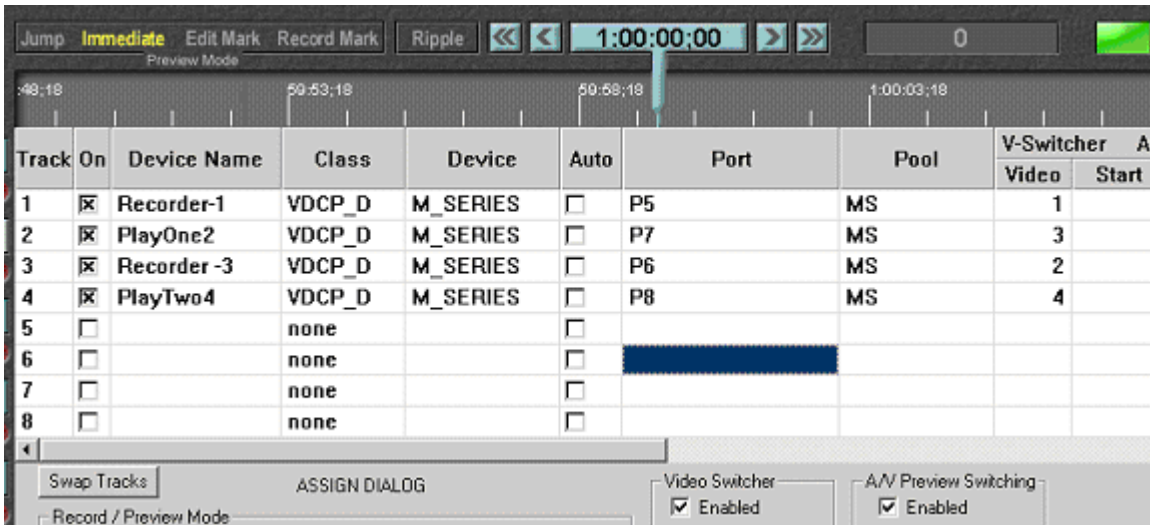
4. Connect sync reference to the M-Series. Setup Audio and Video as desired for your operation. Be sure to select the Video Input source for your Record channel.
 - a. Select **System**
 - b. Select **Config**
 - c. Select **Channel**
 - d. Select **Video Input**



Fastrack setup for VDCP control of M-Series

5. On Fastrack, setup the assignments to control the M-Series.
 - a. Press **[SHIFT][ASSIGN]** to open the Fastrack Assignment Page.
 - b. Select **VDCP_D** for the Class.
 - c. Select **M-SERIES** as the Device.

On Fastrack, the **Device Name** of M-Series **Players** must contain the Protocol Control Port digit, and the Device Name of M-Series **Recorders** must contain the Protocol Control Port preceded by a minus (-) sign. For example:



The screenshot shows the Fastrack Assign Dialog window. At the top, there are controls for 'Jump' (set to 'Immediate'), 'Edit Mark', 'Record Mark', 'Ripple', and a time display of '1:00:00:00'. Below this is a table with columns: Track, On, Device Name, Class, Device, Auto, Port, Pool, V-Switcher, and Start. The table contains 8 rows. Rows 1-4 are checked in the 'On' column. Row 1: Recorder-1, VDCP_D, M_SERIES, P5, MS, V-Switcher 1. Row 2: PlayOne2, VDCP_D, M_SERIES, P7, MS, V-Switcher 3. Row 3: Recorder -3, VDCP_D, M_SERIES, P6, MS, V-Switcher 2. Row 4: PlayTwo4, VDCP_D, M_SERIES, P8, MS, V-Switcher 4. Rows 5-8 are not checked and have 'none' in the Device Name, Class, and Device columns. Below the table, there are checkboxes for 'Swap Tracks', 'Video Switcher' (checked), and 'A/V Preview Switching' (checked).

Track	On	Device Name	Class	Device	Auto	Port	Pool	V-Switcher	Start
1	<input checked="" type="checkbox"/>	Recorder-1	VDCP_D	M_SERIES	<input type="checkbox"/>	P5	MS	1	
2	<input checked="" type="checkbox"/>	PlayOne2	VDCP_D	M_SERIES	<input type="checkbox"/>	P7	MS	3	
3	<input checked="" type="checkbox"/>	Recorder -3	VDCP_D	M_SERIES	<input type="checkbox"/>	P6	MS	2	
4	<input checked="" type="checkbox"/>	PlayTwo4	VDCP_D	M_SERIES	<input type="checkbox"/>	P8	MS	4	
5	<input type="checkbox"/>		none		<input type="checkbox"/>				
6	<input type="checkbox"/>		none		<input type="checkbox"/>				
7	<input type="checkbox"/>		none		<input type="checkbox"/>				
8	<input type="checkbox"/>		none		<input type="checkbox"/>				

In the example above, the Device Name assigned to Track 1 is **Recorder-1**. The (-) minus defines this channel as a Recorder channel, and the “1” defines this channel as Protocol Control Port 1. The name “Recorder” can be replaced by any descriptive name that does not contain a (-) minus or the numbers 1 through 4.

In the example above, the Device Name assigned to Track 2 is **PlayOne2**. The absence of a minus sign defines this channel as a Player channel, and the “2” defines this channel as Protocol Control Port 2. The name “PlayOne” can be replaced by any descriptive name that does not contain a (-) minus or the numbers 1 through 4.

REMEMBER: Do not use a dash ‘-’ in the Device Name as it will be interpreted as a Minus sign.

6. Physical connection between Fastrack and the M-Series is via RS-422 machine control cables.
 - a. Connect an RS-422 cable between Fastrack and the M-Series for each device. You can use any available ports.
 - b. Enter the Fastrack port numbers in the **Port** column of the Assign dialog. Any physical port on the back of the M-Series can be used for any device. The M-Series physical port number is not used.