

Fastrack Release Versions 5.0x

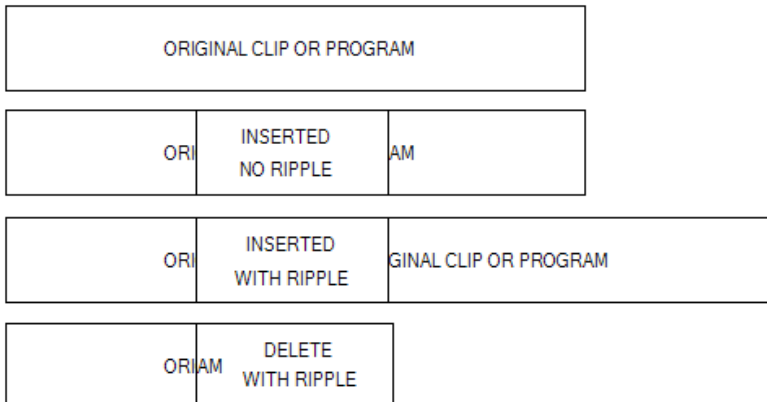
This document covers changes made to Fastrack since 4.9

READ ME FIRST! It is *highly recommended* that, before you load version 5.0, you rename the current ftconfig.ini file in the ftruntime folder in order to create and start a new configuration file.

Added 3/17/11 – 5.3x62

- NEW – GV K2 Summit Server – Insert & Delete with/without Ripple** – Fastrack can now insert new media into an existing K2 clip and either overwrite the old material, resulting in no length change to the original clip, or you can insert the new material and ripple the existing material to follow at the end of the newly inserted material, resulting in a clip longer in length by the duration of the inserted material.

Likewise, you can now delete a section of media from an existing K2 clip, and either overwrite the old material with black, or pull-up the remaining segments.



- 1a. Press **[CTRL][INSERT]** ([GANG]) to **INSERT** the material from the selected Track and over-write the existing material, regardless of the state of the Ripple indicator..
- 1b. Press **[ALT][INSERT]** ([GANG]) to **INSERT** the material from the selected Track and ripple the existing material, regardless of the state of the Ripple indicator.
- 1c. Press **[CTRL][DELETE]** ([CONST]) to **DELETE** the material from the Record Event, and replace it with BLACK video and silence, regardless of the state of the Ripple indicator.
- 1d. Press **[ALT][DELETE]** ([CONST]) to **DELETE** the material from the Record Event, and ripple the remaining material, regardless of the state of the Ripple indicator.

Added 3/1/11 – 5.3x60

- NEW – GV K2 Summit Server A/V M/E** – Fastrack now also controls both the internal Audio & Video M/E of the GV Summit Server. No specific Fastrack settings changes are required for this control and an external mixer and switcher can still be controlled simultaneously. See **TechNote #1** later in this document for additional information.

Added 1/7/11 – 5.3x56

3. **NEW – Omneon – OmNet Record Slaves** –This feature is designed to allow you to create and name a Record Clip on one or more Omneon channels, start and stop the recording(s), and automatically have new Record Clips created using the same original names, but with incremental numeration. For example; Original Record Clip name=BOB. Subsequent Clip Name=BOB1. Next Clip Name=BOB2, and so forth. *See the TechNote later in this document for additional information.* (Thank you “PAX River”)

Added 12/20/10 – 5.3x54

4. **REVISED! – GVG K2 Summit Server – *This is a change to the Summit K2-H operation:*** When pressing [SHIFT][ASSGN] to assign the LRT record channel “PORT”, it must be assigned using the letter **R** rather than **C**. For example: Bh09110578:**R1** instead of Bh09110578:**C1**, where Bh09110578 is the name of the K2 computer. This automatically links the next channel (in this example, C2) as the playback channel for the LRT Track....that is: it records using C1 and plays back using C2.

Added 12/10/10 – 5.3x51

5. **NEW – GVG K2 Summit Server Video M/E** – Fastrack now controls the internal Video M/E of the GV Summit Server. No specific Fastrack settings changes are required for this control, and an external switcher can still be controlled simultaneously. *See **TechNote #1** later in this document for additional information.* (Thank you “C.B.S. New York.”)
6. **NEW – K2-H – TL TIME = TC IN** – When you press [ASIGN] to mount a Linear Record Track, in the revised Dialog is a check box labeled “**TL Time = In**”. With this box checked , the timecode you enter for the start of the K2 Record Event will also be used to set the Timeline location. With this box not checked, the Timeline will not be affected by this action. The checkbox will default to checked. Its state will be remembered in the FTConfig.
7. **IMPROVED – K2-H – K2 Clips With Marks** – K2 Clips with K2 Mark-In points can now be used without an offset being created. (Thank you “Entertainment Tonight, C.B.S. Hollywood.”)

Added 11/17/10 – 5.3x44

8. **NEW – Linear Edit Mode – TL TIME = TC IN** – When you press [ASIGN] to mount a Linear Record Track, in the revised Dialog is a check box labeled “**TL Time = In**”.

With this box checked , the timecode you enter for the start of the LRT will also be used to set the Timeline location. With this box not checked, the Timeline will not be affected by this action. The checkbox will default to checked. It’s state will be remembered in the FTConfig. This version is for Record VTRs ONLY! In the next release(s) we will add this feature for K2 server Record channels.

Added 11/12/10 - ALL

9. **NEW – Fastrack.HD Manual – On-line interactive .PDF** – We have added a .pdf of the latest V5 Manual to the desktop of all new Fastrack systems beginning Nov. 15, 2010. For those of you who already have Fastrack systems prior to Nov. 15, 2010, you can download this file from our website using the following URL: http://www.editware.com/_Fastrack/FT-K7_Manual-2010.pdf

Once downloaded, place the “FT-K7_Manual-2010.pdf” file in the c:/fastrack/**fruntime** directory. Press **[F1]** or [click] on **HELP [F1]** to open the manual. Once open, [click] on the “**Bookmark**” tab to open the Table Of Contents. This manual is interactive, and selecting any heading or sub-heading in the TOC will take you directly to that section of the manual. [Clicking] on the last TOC entry, **INDEX**, will display the manuals Index, where individual items can be found alphabetically, and searched to by [clicking] on the associated page number. (Thank you “Kyunghhee, AIBB, S. Korea”)

Added 11/2/10 – 5.3x39

10. **IMPROVED – Fastrack.HD – Tracks 9-12** – We have added keystrokes for accessing Tracks 9-12. While not the most desirable solution, it does allow direct access to the Tracks and also enables their use within Macros. Press **[ALT][T1]-[T4]** or **[ALT][T5]-[T8]** to access T9-T12. You can also still access them through use of the mouse or with the [UP ARROW] / [DOWN ARROW] keys. (Thank you “WWE, Stamford, CT”)

11. **IMPROVED – Fastrack.HD – Expanded Dialogs** – We have resized the browser dialogs for the Omneon OmNet, GVG K2 and Summit, and VDCP servers to include all the browser fields.
12. **IMPROVED – Fastrack.HD – Mode Status** – We have moved the Mode Status warnings from under the Fastrack logo at the top left of the screen, to the top of the Edit screen between the CTI and system lamps.

Added 10/15/10 – 5.3x31

13. **FIXED – Event PEGS** – Somewhere down the line, Event PEGS stopped working. Who knew! This is now fixed (with some intermittent “cosmetic” errors which will be dealt with forthwith). (Thank you “Turner Studios, Atlanta”)
14. **FIXED – USB GPI – Fastrack.HD** – A problem with USB GPI not triggering has been resolved. (Thank you “WWE, Stamford, CT”)

Added 10/12/10 – 5.3x27

15. **NEW – Fastrack.HD – 12 Track Version** – Software for the new Fastrack.HD is now available with the 12 Track display and larger Video Capture Window. If you purchased the new Fastrack.HD on Windows XP or upgraded your Fastrack SE to the .HD version, contact boobl@editware.com and I will put the new software in your folder on our ftp site for you to download.

Added 9/25/10 – 5.3x23

16. **NEW – Omneon – 720p / 60fps TC Control** – Control of the Omneon server is now also available for those who use the 720p / 60fps format. 30fps and 60fps devices can be used simultaneously. (Thank you “ABC, Washington & ESPN, Around The Horn”)

Added 8/6/10 – 5.3x3

17. **NEW – ALL – Source Event Backtime** – A new feature has been added that automatically calculates the duration of a Source Event if a new IN or OUT point is marked. The operation is as follows:

Pressing **[ALT][MARK IN]** or **[ALT][IN]** on a Source Event marks an IN-point and automatically adjusts the Duration of the Source to be the same as the Record Event duration, regardless of the state of the INIT Page option "UseSrcDur". The In and Out of the Source Event is aligned with the In and Out of the Record Event.

Pressing **[ALT][MARK OUT]** or **[ALT][OUT]** on a Source Event marks an OUT-point and automatically adjusts the Duration of the Source Event to be the same as the Record Event duration, regardless of the state of the INIT Page option "UseSrcDur". The In and Out of the Source Event is aligned with the In and Out of the Record Event.

Please note the following: **[Alt][Mark]** is only valid if there is an Event on the LRT / **[Alt][Mark]** is NOT valid if there is more than 1 clip on the selected track (for now). If there is more than one source Event on the same Track, an error message will appear in the message window stating that this is not allowed / To be consistent with **[Shift][Mark]**, **[Alt][Mark]** only uses the CPI and ignores the CTI / A new **K6a.FKM** file is required in the FTRuntime/Keymaps folder. (Thank you “CCTV, Beijing”)

Added 8/2/10 – 5.3x1

18. **NEW – Fastrack.HD – Upgraded Fastrack** – The new **Fastrack.HD** platform has been released, and is now available in an upgrade package for existing Fastrack systems. Here are just a few of the reasons to upgrade:

- | | |
|--|--|
| <input checked="" type="checkbox"/> Full 1-year warranty or extension | <input checked="" type="checkbox"/> Faster front side bus |
| <input checked="" type="checkbox"/> Windows XP Professional OS | <input checked="" type="checkbox"/> Multiple SD/HD display resolutions |
| <input checked="" type="checkbox"/> Intel Core 2 Dual or Quad Processor | <input checked="" type="checkbox"/> Select from 8 or 12 Track displays (mid-October, 2010) |
| <input checked="" type="checkbox"/> Upgraded 400 W power supply | <input checked="" type="checkbox"/> Multiple Skins, user selectable (November, 2010) |
| <input checked="" type="checkbox"/> 320BG Hard Drive (or greater) | <input checked="" type="checkbox"/> CD/DVD R/W |
| <input checked="" type="checkbox"/> Support for Analog and Tri-level sync | <input checked="" type="checkbox"/> 4GB Memory |
| <input checked="" type="checkbox"/> Version 5 software | <input checked="" type="checkbox"/> AJA SD/HD multi-format video capture card |
| <input checked="" type="checkbox"/> Ongoing development compatible! | |
| <input checked="" type="checkbox"/> Support for 1024 x 768 & 1680 x 1050 single and dual screen resolution | |

19. **FIXED – Linear Edit Mode – UseSrcDur** – With **UseSrcDur** selected in the INIT Page, if the source times were later than the physical Black Track, the Record Event would extend past the end of the Black Track and you could no longer Mark or drag the Record Event. Now, regardless of the source length, the Record Event out-point will never exceed the end of the Black Track. (Thank you “SBS, S. Korea”)
20. **FIXED – EDLs – Ripple** – A problem was found where when the EDL was rippled, the TL positions in the EDL would update incorrectly. This has been fixed. (Thank you “CCTV, Beijing”)
21. **IMPROVED – Omneon – OmNet Control** – A new Fastrack control driver has been written for controlling Omneon servers over a Network. This new driver was tested with 16 (sixteen) Omneon channels simultaneously from multiple servers, and the cue speed as well as clip loading and unloading has been greatly improved. (Thank you “ABC News, D.C.” and Omneon Engineering Support)

Added 7/7/10 – 5.2.R01

22. **RELEASED – Release Software – Version 5.2.R01 has been released! Thanks to all for your invaluable input.**

Added 6/24/10 – 5.1.x10

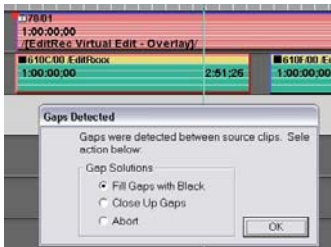
23. **NEW – EVS Recall from EDL – Multi-Event Recall** – A new feature has been added that allows the user to recall multiple individual edits or a group of edits from the EDL at one time without clearing Events from the Timeline. See **TechNote #4** later in this document for additional information. (Thank you “CCTV, Beijing”)

Added 6/20/10 – 5.1.x08

24. **FIXED – Linear Edit Mode – Auto Assemble** – The problem with the Record Track disappearing from the screen when an edit reached the end of the Black Track during an Auto-assembly has been found and fixed. (Thank you “CCTV, Beijing”)

Added 6/9/10 – 5.0.x06

25. **INFO! – EVS EditRec – Record Channel Pre-roll** – After an EVS EditRec edit, you may have had to press [SHIFT][RESET] in order for the Record channel to pre-roll for the next edit. Be advised that the pre-roll must be set to a value greater than 1 second. Setting it to “0” causes the above problem. (Thank you “CCTV, Beijing”)
26. **NEW – EVS EditRec – Virtual Edits** – Multiple Events cannot be non-linearly inserted into the program if Fastrack detects a “gap” between source Events. Now, when this error is detected, the following dialog appears:



Added 5/19/10 – 5.0.x05

27. **FIXED – Linear Edit Mode – UseSrcDur (Allow Gap)** – A problem was found and fixed where **UseSrcDur** did not work if any Track was disabled. (Thank you “CCTV, Beijing”)
28. **INFO! – EVS EditRec – Sony Instant Cue** – With an EVS PB Channel assigned as a Sony VTR, if you wish for the CUE or SEARCH commands to be instantaneous, make a copy of the Sony BVW-75 .dev file in the ftruntime folder, rename it to something like “SonyEVS”, and in the new .dev file change **cue_with_shuttle** to “0”.
29. **NEW – EVS EditRec – Load PL From Fastrack** – A new feature has been added to the EVS EditRec operation that allows the user to load a specific PL (PlayList) onto the Fastrack Record Track directly from Fastrack. See **TechNote #4** later in this document. (Thank you “CCTV, Beijing”)

30. **NEW – EVS EditRec – Non-linear inserts** – We have added the ability to INSERT Events into an EditRec program “virtually”, with or without Ripple. We have also added the ability to DELETE with Ripple. See **TechNote #3** later in this document. (Thank you “CCTV, Beijing”)

Added 4/30/10 – 5.0.x04

31. **FIXED – VDCP – FFWD / REW** – A problem was found where after pressing [REW] or [FFWD] you had to press [ALLSTOP] before you could play the current server channel. This has been found and fixed. (Thank you “CCTV, Beijing”)
32. **FIXED & IMPROVED – LINEAR EDIT MODE – Allow Gap** – A problem was found where “Allow Gap” was not implemented properly if ANY Track was disabled. This has been found and fixed.

Also, due to customer request, we have changed the name of this feature from “AllowGap” to “UseSrcDur” (Use Source Duration).

If “UseSrcDur” is **enabled** (YES in the INIT Page or Yellow in the Shortcuts), the Record Duration will be defined by the first encountered Source gap, and the length of the Record Event will be adjusted accordingly.

If “UseSrcDur” is **disabled** (NO in the INIT Page or light grey in the Shortcuts) the Record Event Out-point will be used for the edit duration. (Thank you “CCTV, Beijing”)

33. **NEW – LINEAR EDIT MODE – FastCut** – A new “FastCut” feature has been added to the INIT Page that allows the user to have multiple Tracks populated with server clips or VTR Events, and be able to use only the selected Track in the edit without having to disable all the other Tracks. This feature can be assigned to a shortcut. (Thank you “CCTV, Beijing”)

Pre-Release

34. **NEW – VDCP – ADD / INSERT Multiple Clips from Clip Directory** – We have added the ability to simultaneously mount multiple selected Clips from the Fastrack Clip List onto a VDCP Track.



ADD [F1] – All selected clips are mounted on the selected Track. If they cannot be added at the selected location, they will be added at the end. All standard Fastrack operations apply here.

Insert [F2] – All selected clips are inserted between the selected clips. The following clips are rippled. You must first position the CTI at the desired location between two clips. If the CTI is not between clips, the clips will be placed at the end of the Track. All standard Fastrack operations apply here.

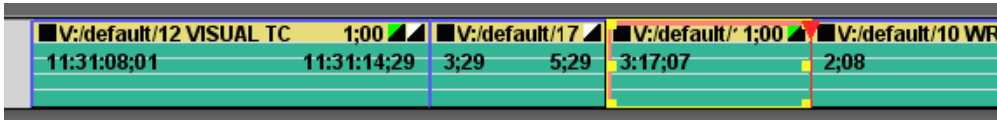
Replace [F6] – Selection of multiple clips does not apply to the Replace function. If multiple clips are selected, only the first clip will be used.

35. **NEW – Ready for testing! – Pixel Power Clarity CG** – We have added the ability to modify Clarity text fields directly from the Fastrack. See **TechNote #2** for additional information. (Thank you “Prime TV”, Canberra, AU)
36. **NEW – Ready for testing! – Pixel Power BrandMaster Switcher** – A new driver has been developed for RS-232 control of the Pixel Power BrandMaster Switcher. (Thank you “Prime TV”, Canberra, AU)
37. **NEW – Ready for testing! – Pixel Power Clarity CG** – A new driver for the Pixel Power Clarity Graphics Generators has been developed. Control is over Ethernet via its XML protocol. This driver enables Fastrack to browse and load Jobs, effects, sequences and specific pages stored on the GG, and trigger them frame accurately on the Fastrack Timeline. See **TechNote #1** for additional information. (Thank you “Prime TV”, Canberra, AU)
38. **NEW – Linear Edit Mode – Keep Out-point** – A new INIT Page item has been added to maintain the current OUT-point on the Record Track even if the user manually terminates the edit early. (Thank you “Entertainment Tonight”, Los Angeles)

TECHNOTE #1 – K2 Summit A/V M/E Control

Fastrack can control the internal A/V M/E of the GV Summit Server. No specific Fastrack settings changes are required for this control, and an external switcher and mixer can still be controlled simultaneously.

1. Assign back to back clips on a Summit Track with appropriate tail and head handles, as the Summit M/E performs CENTER-CUT DISSOLVES.



Notice in the Events shown above that the transition icons are at the end of the Events rather than at the beginning. This is because the Summit M/E effect is associated with the END of the selected Event; that is, the transition command is placed on the FROM Event rather than the TO Event. Transition icons at the beginning of the Event still reflect the transitions of any external mixer & switcher.



= Audio Only

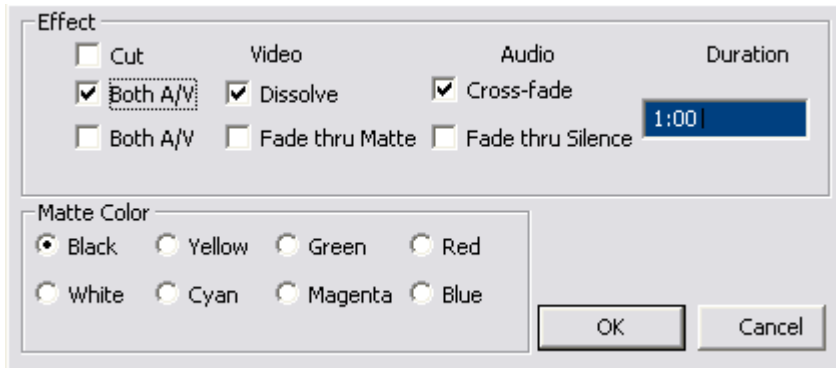


= Video Only



= Audio & Video

2. Select the FROM clip and press **[SHIFT][DISS]**. The following Summit M/E Dialog will open. Select transition type accordingly.



For a shortcut method of programming transitions quickly without using the Dialog, type the desired transition rate and press **[SHIFT][DISS]**. The new rate will be applied with all the previously defined settings.

The following transition types are supported:

- Transition between 2 (two) K2 clips directly (dissolve clip-to-clip)
- Transition through a matte background (dissolve clip to background to clip)
- Transition through black (dissolve clip to black to clip)
- Fade from black (fade from black to clip)
- Fade to black (fade from clip to black)

The Summit M/E works between Clips on the same Track. Transitions between Clips on separate Tracks would be performed by an external switcher.

L2D files created with previous Fastrack software versions will not be compatible with this software.

TechNote: Omneon Record Slaves

INTRODUCTION

This feature is designed to allow you to create and name a Record Clip on one or more Omneon channels, start and stop the recording, and automatically have new Record Clips created using the same original names, but with incremental numeration. For example; Original Record Clip name=BOB. Subsequent Clip Name=BOB1. Next Clip Name=BOB2, and so forth.

SETUP

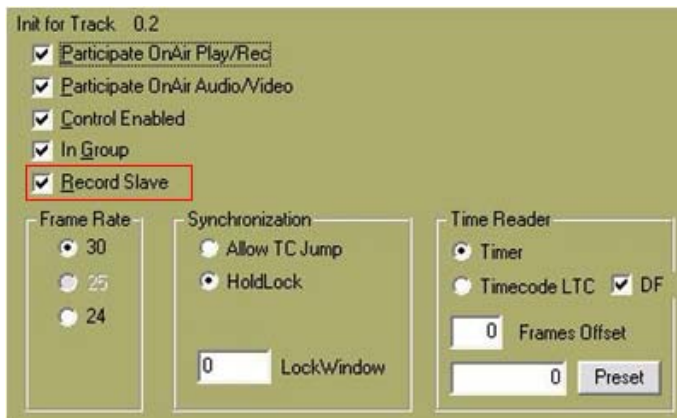
1. Assure that you have Fastrack software version: **5.03.x56** or later.
2. Close Fastrack.
3. In the Fastrack directory, go to **Fruntime/Ftconfig.ini**.
4. Search for the heading **[OMNET]**. If the heading [OMNET] does not exist in the .ini file, create it at the beginning of the file and add the text below:

```
[OMNET]
RecSlaveAllowed=0
RecDelay=13
PlayDelay=11
OverRecord=0
EvenField=0
UseStop=1
```

5. The [OMNET] section should look like the example above. Enable the feature: **RecSlaveAllowed=1**. To disable, change to =0. If the setting "RecSlaveAllowed" does not exist, add it to the section.
6. Save, close, and run Fastrack.

Once Fastrack is running:

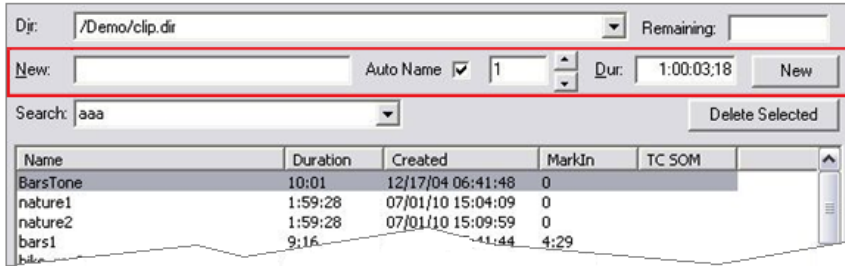
7. Select the Omneon Track you wish to apply this feature.
8. Press **[INIT]**. The INIT Dialog for that Track will open.



9. Check the **Record Slave** box.
10. Repeat for each Omneon Track you wish to apply this feature. When done, dismiss the INIT Dialog.

OPERATION

11. Select a Track to mount a Record Clip.
12. Press **[ASSGN]** to open the Clip Browser.



13. Enter a name for the record clip in the **New** text field.
14. Check the **Auto Name** box.
15. Set your chosen **suffix number** in the spin box field.
16. Enter your desired default Record Event duration in the **Dur** field. It is wise to make this duration longer than needed. For an explanation, see #17 below.
17. Press the **[New]** button on the right and the Record Event will be placed on the Track at the CTI.
18. Repeat on other enabled Tracks as desired. There is no need to close the Track INIT Dialog each time. Fastrack will remember your desired name, suffix and duration for each additional Track. When done, dismiss the browser dialog.

Record when ready. To end the recording and create an auto pickup with the next Record Events:

19. Press the **[RECORD]** button to terminate the edit **before** reaching the end of the Record Events. If the recording ends or if you press **[ALLSTOP]**, Fastrack default behavior will occur. That is; the recording will end and no new Record Event will be created.

When you "bump out", Fastrack will turn your old Record Events into Play Events, and automatically place new Record Events at the end of the old Record Events. The CTI will be automatically positioned at the new record in-point. Press **[RECORD]** again to repeat the process.